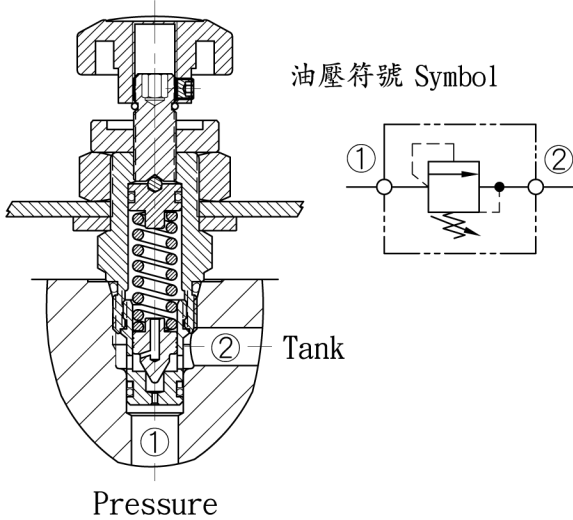
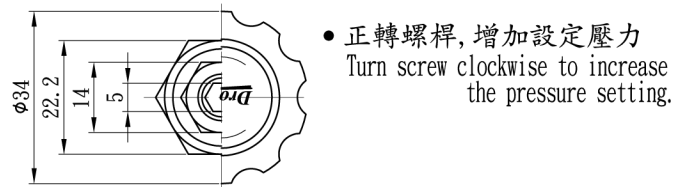


插式調壓閥 Relief Cartridge Valves - Remote Control.



- 閥系說明：提動式，直動型。
Description : Poppet , Direct acting.
- 通過流量 Flow rating $Q_{max.} : 2 \text{ l/min.}$
- 最高壓力 Max. pressure $P_{max.} : 400 \text{ bar.}$
- 插式閥重 Cartridge only weight : K - 0.13 kg.
L - 0.10 kg.

插閥尺寸 Dimensions (mm)

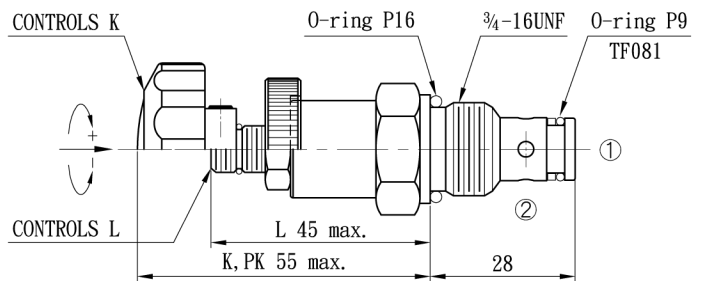


閥孔型號 Valve Cavity : C082
成型刀具 Cavity Tools : CT28-D, CT28-R

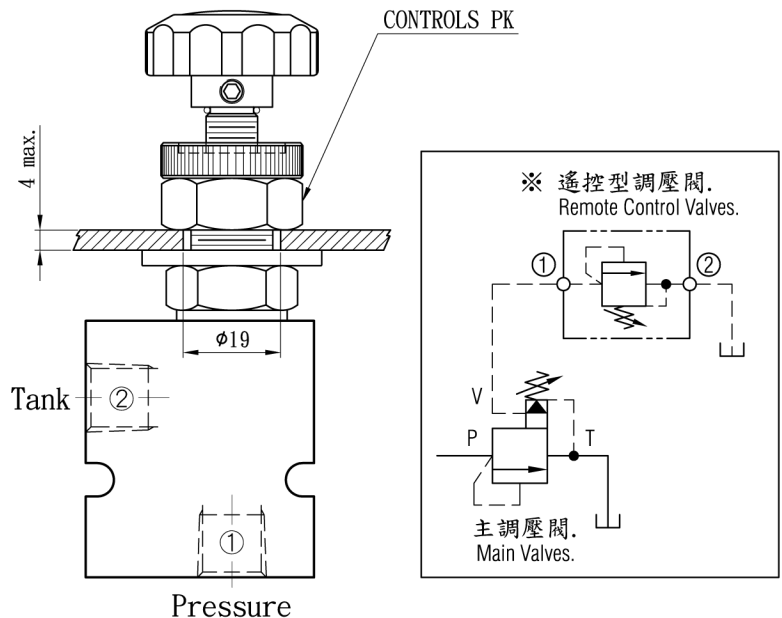
※請參閱 See page C-T NO.1

選購型號 Ordering Code

CMD - 082 - L10N
① ② ③ ④ ⑤

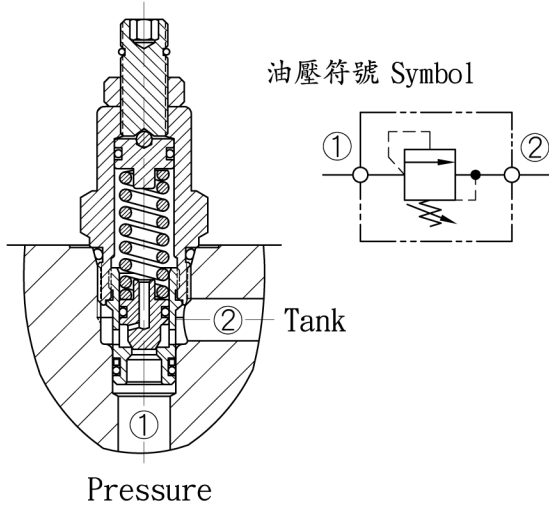


- ① 調壓閥 - 遙控型
Relief Valves - Remote Control.
- ② 閥孔型號
Cavity Size.
- ③ 調整方式 Controls.
L - 螺桿調整. Standard Screw Adjustment.
K - 旋鈕調整. Handknob & Locknob Adj.
PK - 面板固定型, 旋鈕調整.
Handknob with Panel Mount.
- ④ 壓力調整範圍
Adjustment Ranges.
03 - 2 to 30 bar.
10 - 3 to 100 bar.
20 - 10 to 210 bar.
30 - 20 to 315 bar.
40 - 30 to 400 bar. (Option)



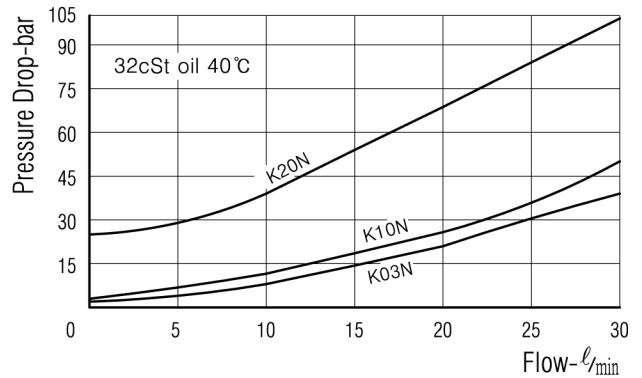
- ⑤ 油封材質
Seals : N - 丁腈橡膠. Buna N.
V - 氟橡膠. Viton.

插式調壓閥 Relief Cartridge Valves.



- 閥系說明：提動式，直動型。
Description : Poppet, Direct acting.
- 通過流量 Flow rating Q max : 20 ℓ/min.
- 最高壓力 Max.pressure P max : 315 bar.
- 插式閥重 Cartridge only weight : K - 0.13 kg.
L - 0.10 kg.

壓損曲線 Flow-Pres. Drop Curve



閥孔型號 Valve Cavity : C082
成型刀具 Cavity Tools : CT28-D, CT28-R

※請參閱 See page C-T NO.1

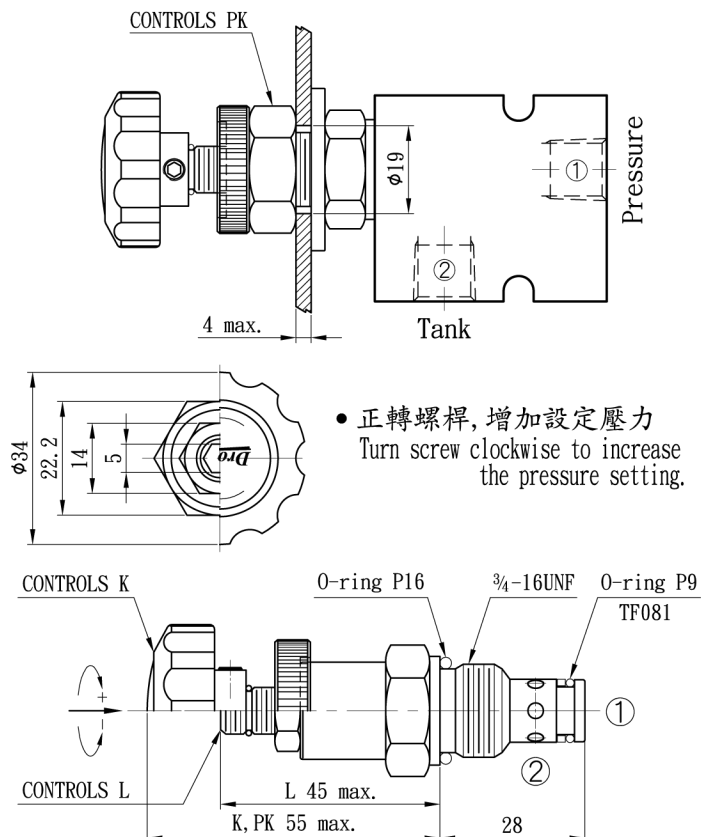
選購型號 Ordering Code

CMR - 082 - L10N

① ② ③ ④ ⑤

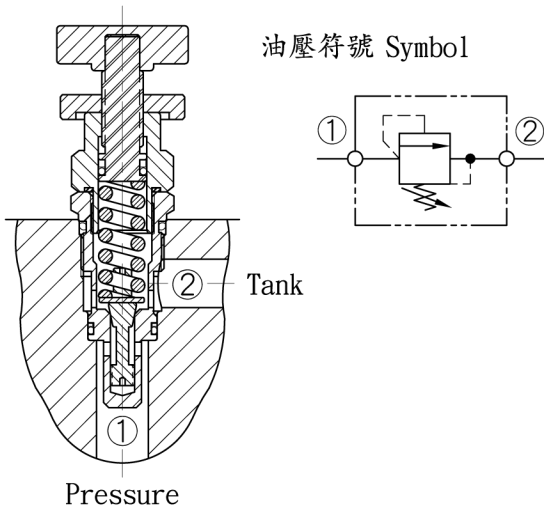
- ① 調壓閥 Relief Valves.
- ② 閥孔型號 Cavity Size.
- ③ 調整方式 Controls.
L - 螺桿調整. Standard Screw Adjustment.
K - 旋鈕調整. Handknob & Locknob Adj.
PK - 面板固定型, 旋鈕調整. Handknob with Panel Mount.
- ④ 壓力調整範圍 Adjustment Ranges.
03 - 2 to 30 bar.
10 - 3 to 100 bar.
20 - 10 to 210 bar.
30 - 20 to 315 bar.
- ⑤ 油封材質 Seals : N - 丁腈橡膠. Buna N.
V - 氟橡膠. Viton.

插閥尺寸 Dimensions (mm)



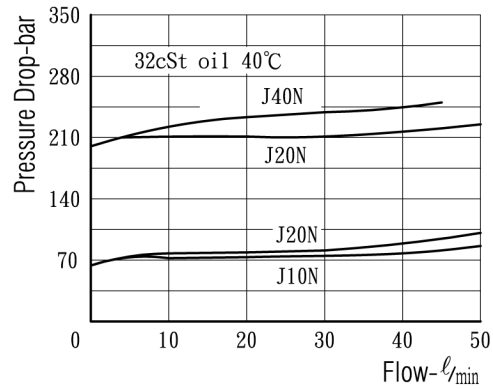
• 正轉螺桿, 增加設定壓力
Turn screw clockwise to increase the pressure setting.

插式調壓閥 Relief Cartridge Valves.



- 閥系說明：直動型，面差式。
Description : Direct acting, Differential area.
- 通過流量 Flow rating Q max. : 50 l/min.
- 最高壓力 Max. pressure P max. : 400 bar.
- 插式閥重 Cartridge only weight : J - 0.16 kg.
KW - 0.31 kg.

壓損曲線 Flow-Pres. Drop Curve



閥孔型號 Valve Cavity : C092
 成型刀具 Cavity Tools : CT29-D, CT29-R

※請參閱 See page C-T NO. 9

選購型號 Ordering Code

CMR - 092 - J 40 N

① ② ③ ④ ⑤

- ① 調壓閥
Relief Valves.
- ② 閥孔型號
Cavity Size.
- ③ 調整方式 Controls.
J - 帽封內藏調整.
Capped Screw Adjustment.
KW - 大型旋鈕調整.
Handknob & Locknob Adj.
- ④ 壓力調整範圍
Adjustment Ranges.
10 - 5 to 100 bar.
20 - 40 to 210 bar.
40 - 110 to 400 bar. (J Only)
- ⑤ 油封材質
Seals : N - 丁腈橡膠. Buna N.
V - 氟橡膠. Viton.

插閥尺寸 Dimensions (mm)

