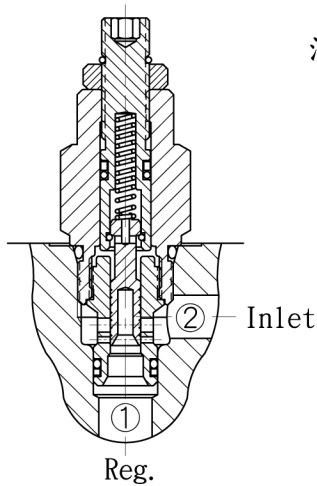
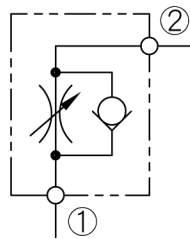


插式流量閥 Flow Control Cartridge Valves.



油壓符號 Symbol



• 閥系說明：流量調整附止回閥。

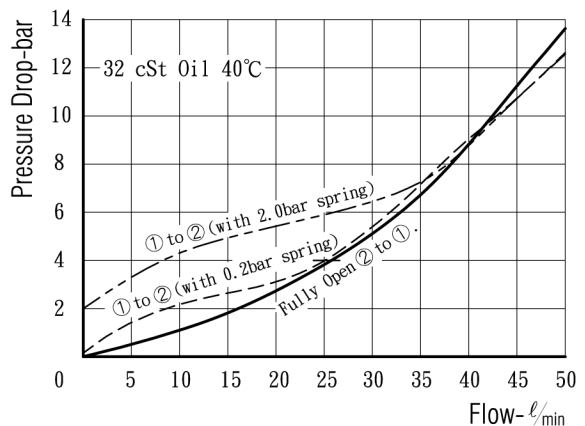
Description : Flow regulator with reverse free flow check.

• 通過流量 Flow rating $Q_{max.} : 35 \ell/min$

• 最高壓力 Max. pressure $P_{max.} : 250 \text{ bar.}$

• 插式閥重 Cartridge only weight : L - 0.13 kg.
K - 0.15 kg.

壓損曲線 Flow-Pres. Drop Curve



閥孔型號 Valve Cavity : C082
成型刀具 Cavity Tools : CT28-D, CT28-R

※請參閱 See page C-T NO. 1

選購型號 Ordering Code

CNC - 082 - L 2.0 N

① ② ③ ④ ⑤

① 流量調節閥

Flow Control Valves.

② 閥孔型號

Cavity Size.

③ 調整方式 Controls.

L - 螺桿調整. Standard Screw Adjustment
K - 旋鈕調整. Handknob & Locknob Adj.

④ 止回閥開閥壓

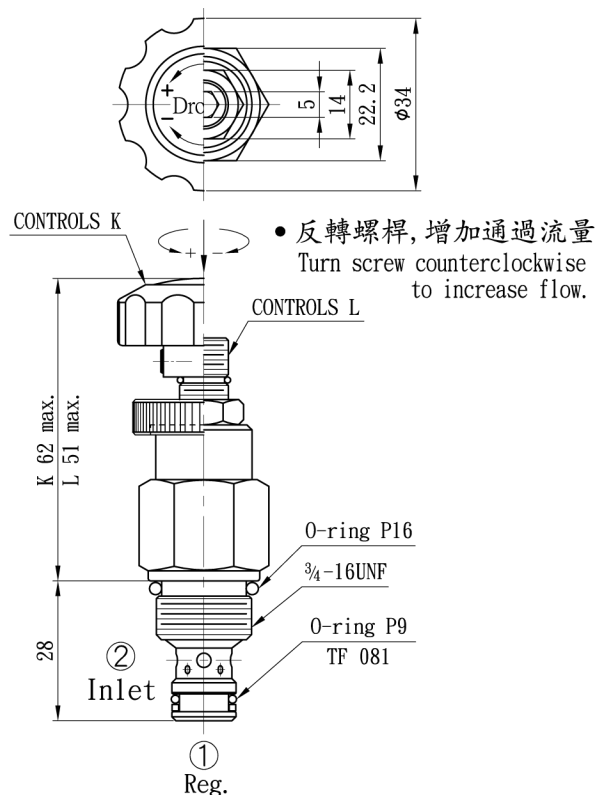
Cracking Pressure.

0.2 - 0.2 bar.
2.0 - 2.0 bar.

⑤ 油封材質

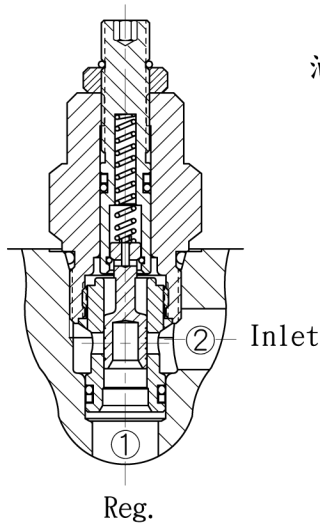
Seals : N - 丁腈橡膠. Buna N.
V - 氟橡膠. Viton.

插閥尺寸 Dimensions (mm)

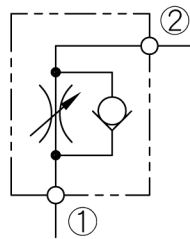


• 反轉螺桿, 增加通過流量
Turn screw counterclockwise to increase flow.

插式流量閥 Flow Control Cartridge Valves.



油壓符號 Symbol



- 閥系說明：流量調整附止回閥。

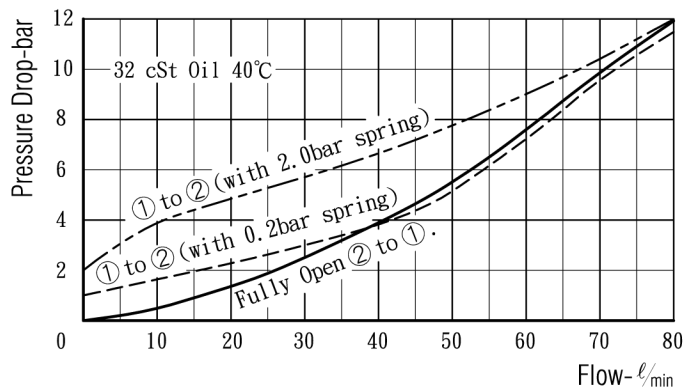
Description : Flow regulator with reverse free flow check.

- 通過流量 Flow rating $Q_{max.} : 60 \text{ l/min.}$

- 最高壓力 Max. pressure $P_{max.} : 250 \text{ bar.}$

- 插式閥重 Cartridge only weight : L - 0.17 kg.
K - 0.19 kg.

壓損曲線 Flow-Pres. Drop Curve



閥孔型號 Valve Cavity : C102
成型刀具 Cavity Tools : CT20-D, CT20-R

※請參閱 See page C-T NO. 2

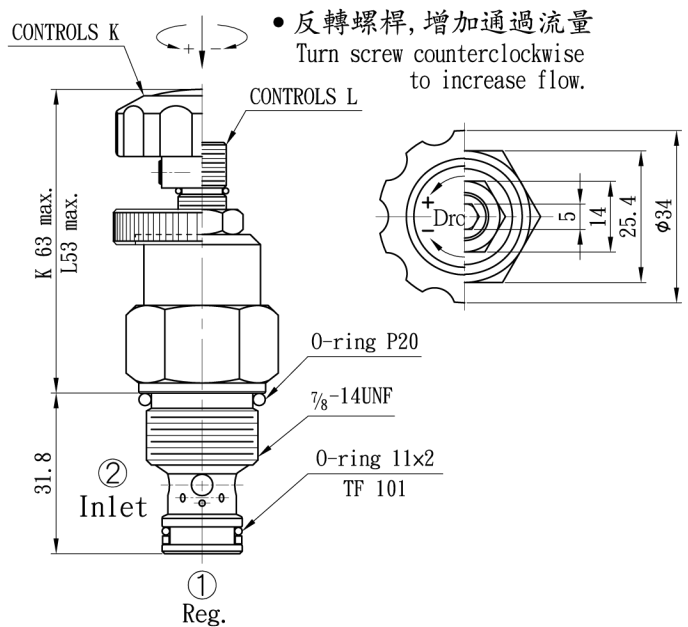
選購型號 Ordering Code

CNC - 102 - L 2.0 N

① ② ③ ④ ⑤

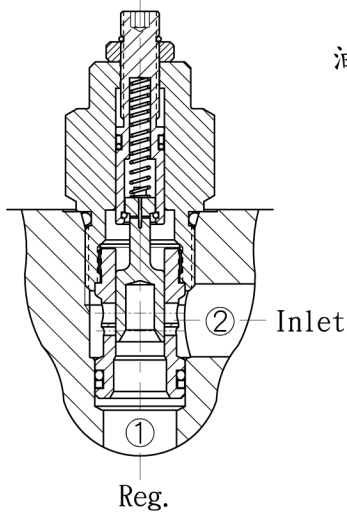
- ① 流量調節閥
Flow Control Valves.
- ② 閥孔型號
Cavity Size.
- ③ 調整方式 Controls.
L - 螺桿調整. Standard Screw Adjustment
K - 旋鈕調整. Handknob & Locknob Adj.
- ④ 止回閥開閥壓
Cracking Pressure.
0.2 - 0.2 bar.
2.0 - 2.0 bar.
- ⑤ 油封材質
Seals : N - 丁腈橡膠. Buna N.
V - 氟橡膠. Viton.

插閥尺寸 Dimensions (mm)

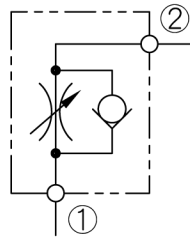


- 反轉螺桿, 增加通過流量
Turn screw counterclockwise to increase flow.

插式流量閥 Flow Control Cartridge Valves.



油壓符號 Symbol



• 閥系說明：流量調整附止回閥。

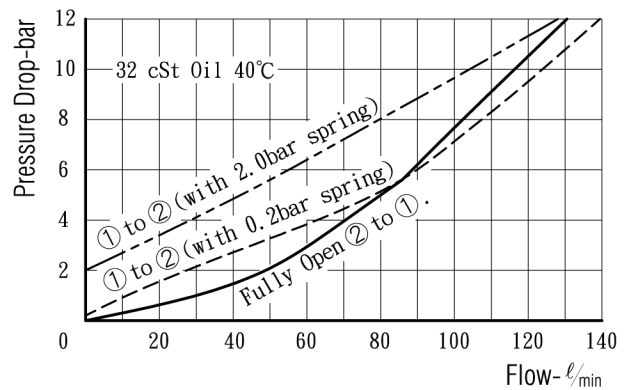
Description : Flow regulator with reverse free flow check.

• 通過流量 Flow rating $Q_{max.} : 100 \text{ l/min.}$

• 最高壓力 Max. pressure $P_{max.} : 250 \text{ bar.}$

• 插式閥重 Cartridge only weight : L - 0.31 kg.
K - 0.33 kg.

壓損曲線 Flow-Pres. Drop Curve



閥孔型號 Valve Cavity : C122
成型刀具 Cavity Tools : CT22-D, CT22-R

※請參閱 See page C-T NO. 3

選購型號 Ordering Code

CNC - 122 - L 2.0 N
① ② ③ ④ ⑤

- ① 流量調節閥
Flow Control Valves.
- ② 閥孔型號
Cavity Size.
- ③ 調整方式 Controls.
L - 螺桿調整. Standard Screw Adjustment
K - 旋鈕調整. Handknob & Locknob Adj.
- ④ 止回閥開閥壓
Cracking Pressure.
0.2 - 0.2 bar.
2.0 - 2.0 bar.
- ⑤ 油封材質
Seals : N - 丁腈橡膠. Buna N.
V - 氟橡膠. Viton.

插閥尺寸 Dimensions (mm)

