

升降閥

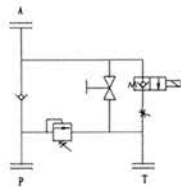
KVS系列

■ 型號說明

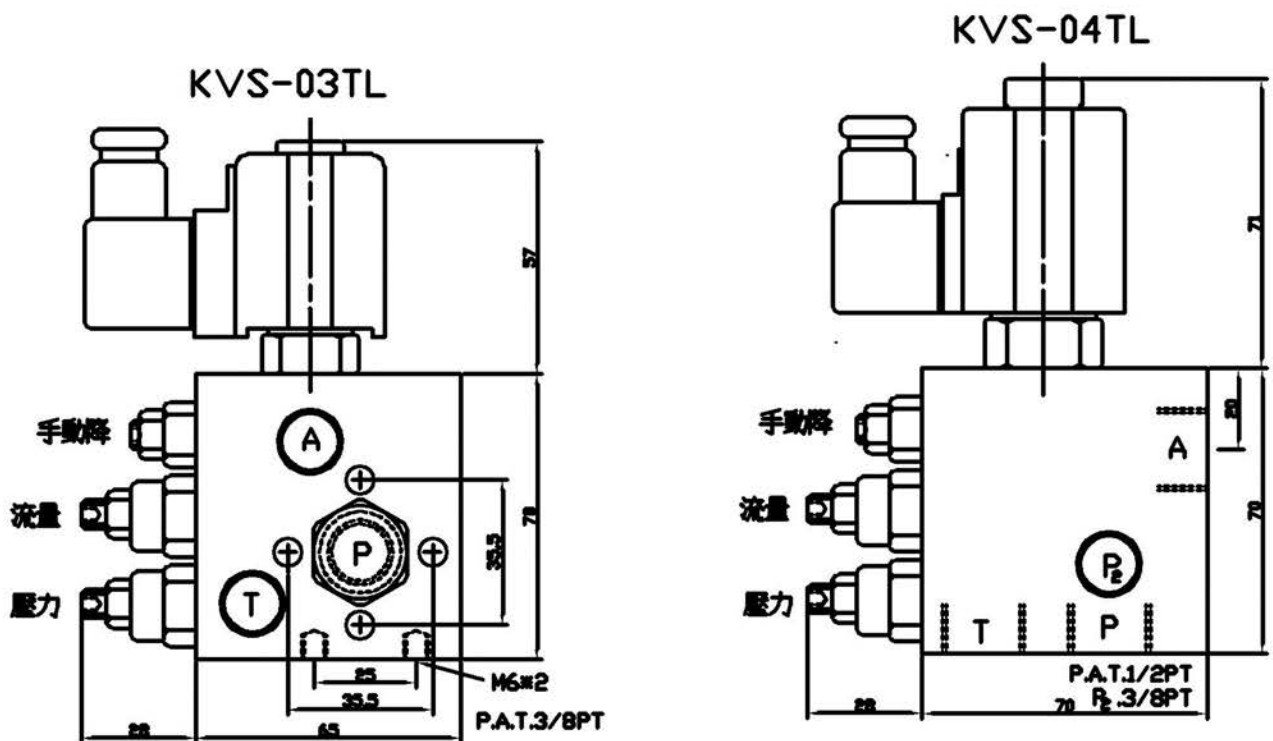
KVS	04TL	A2	01
系列號	通徑	線圈電壓	控制形式
升降閥	03:20L 04:40L 06:70L	參考電磁閥	參考KS 電磁閥



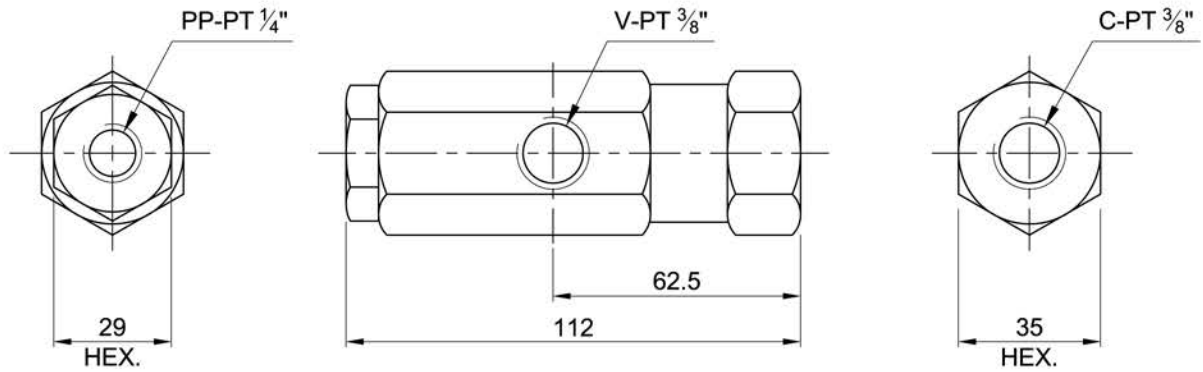
■ 油路圖



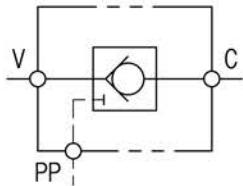
■ 外形圖



管式導開止回閥 Pilot-to-Open Check Valves. (In-Line Type)

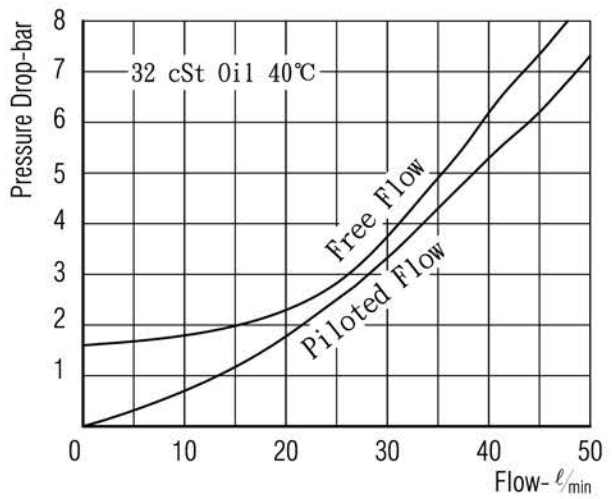


油壓符號 Symbol



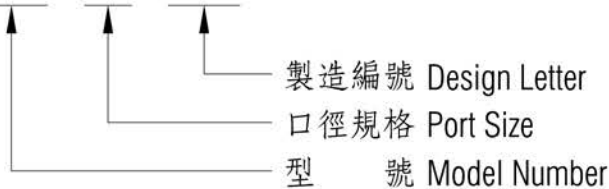
導壓比	Pilot Ratio	4 : 1
通過流量	Flow Rating	30 ℓ/min.
最高壓力	Max. Pressure	210 bar.
閥淨重	Valve Weight	0.75 kg.

壓損曲線 Flow-Pres.Drop Curve



選購型號 Ordering Code

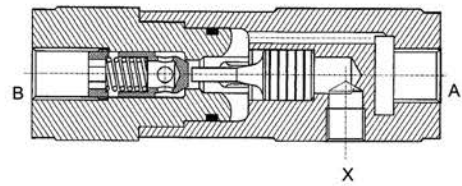
PVI-03-11G



管式導開止回閥 Pilot-to-Open Check Valves. (In-Line Type)

選購型號 Ordering Code

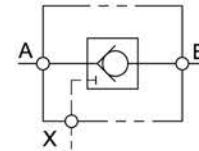
ADRL -10



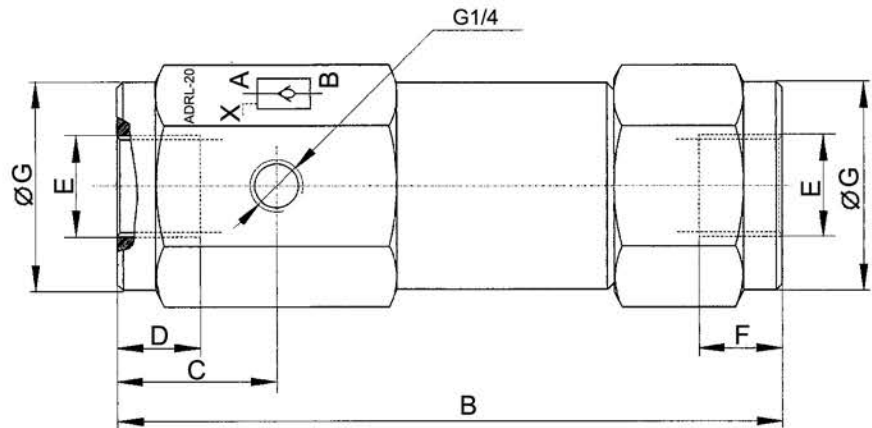
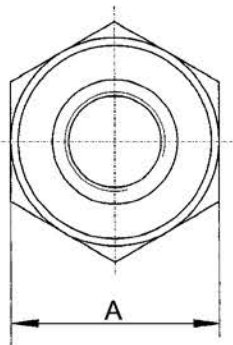
ADRL-15

液壓特性

閥型號	ADRL-10	ADRL-15	ADRL-20	ADRL-32
先導比	4:1			
最大推薦流量 (L/min)	30	60	100	300
最大壓力 (Mpa)	31.5			

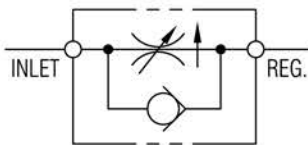
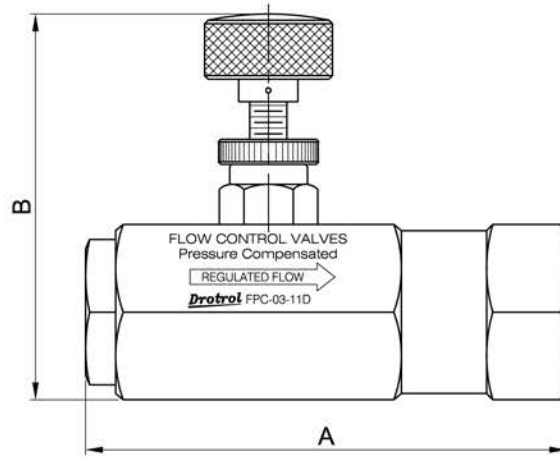
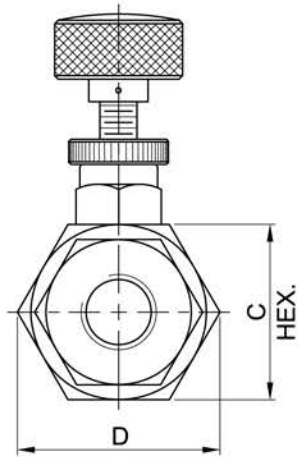


外形尺寸



型號	A	B	C	D	E	F	G	重量(kg)
ARDL-10	41	120	30	14	G3/8	12	40	1
ARDL-15	50	145	33	16	G1/2	16	49	2
ARDL-20	55	175	42.5	18.5	G3/4	19	54.5	2.5
ARDL-32	90	245	53	23.5	G1 1/4	25	87.5	7

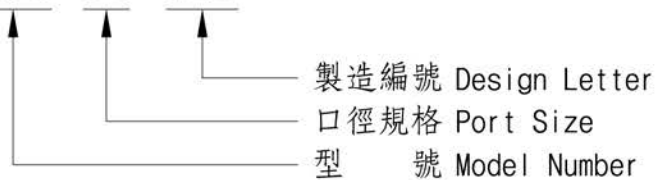
壓補型流量控制閥 Pressure-Compensated Flow Control Valves.



- 最高操作壓力 250 bar.
MAX. OPERATING PRES.
- 最低供給壓力 14 bar.
MIN. REGULATING PRES.

選購型號 Ordering Code

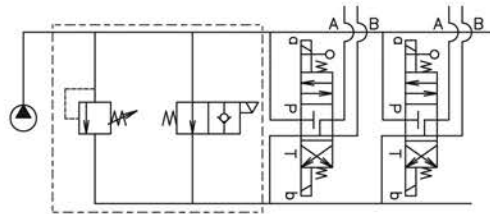
FPC-03-11D



選用規格 Ordering Code

型號 MODEL NUMBER	管徑 PORT SIZE	流量範圍 FLOW RANGES	尺寸 DIMENSIONS (mm)				重量 Weight.
			A	B	C	D	
FPC-03-11D	PT 3/8"	1.0- 18 ℓ _{min}	96	77	35	40	0.66 kg.
FPC-04-11D	PT 1/2"	1.5- 57 ℓ _{min}	109	95	41	46.5	1.00 kg.
FPC-06-11D	PT 3/4"	2.5-112ℓ _{min}	146.5	102	57	65.3	2.60 kg.

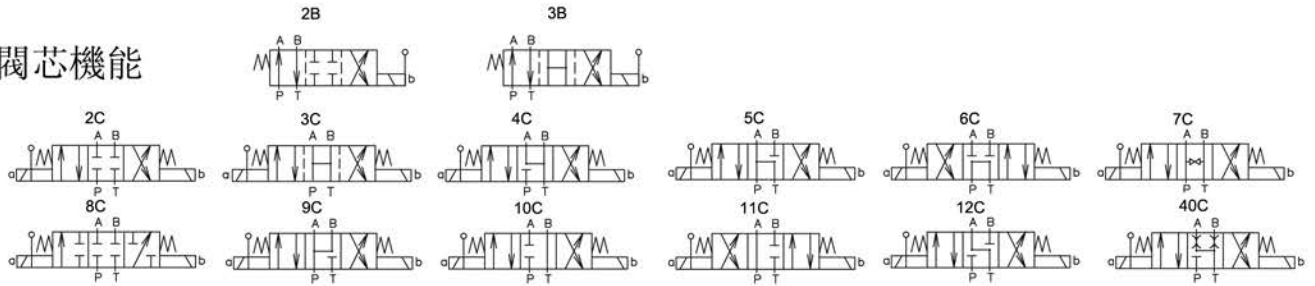
管式電磁多路閥
DST系列



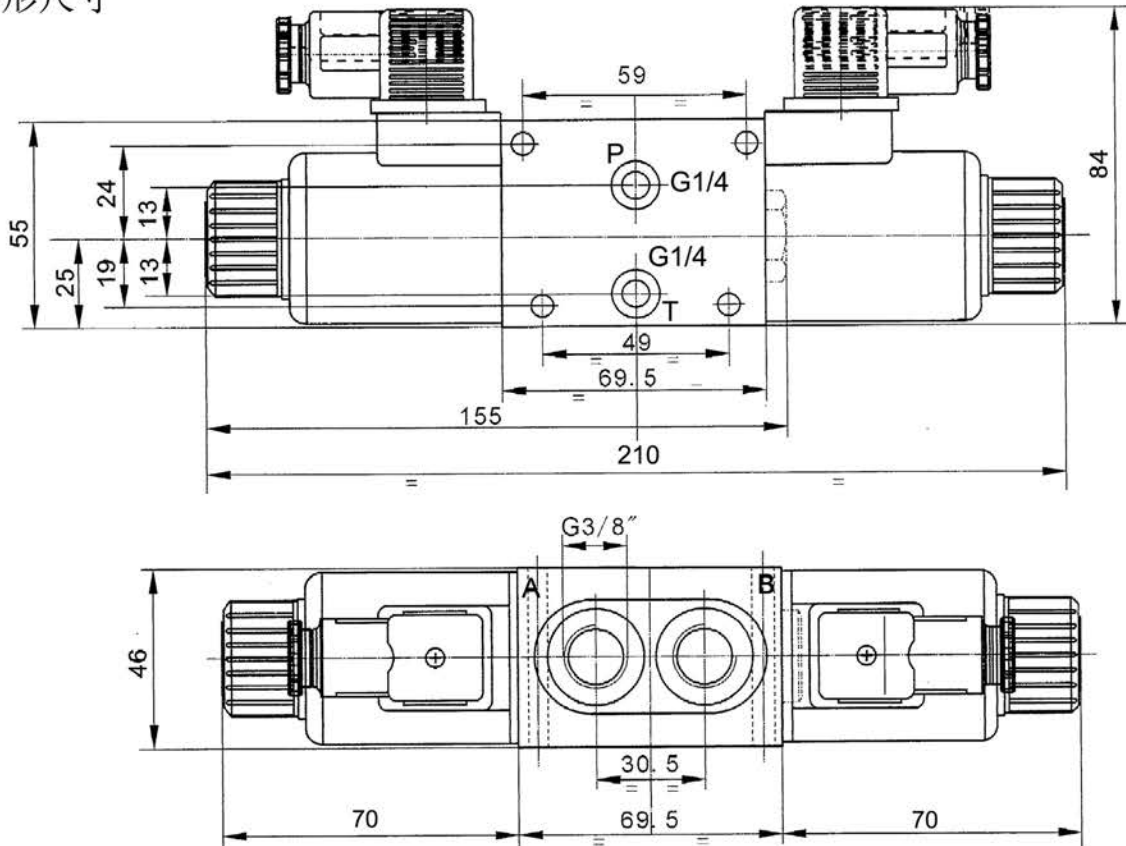
■ 選購說明

DST	02	2C	D2	2	S
系列號	通徑	閥芯機能	線圈電壓	連接片數	帶手動
電磁多路閥	6	見閥芯機能	D2:24V A2:220V D1:12V A1:110V	1-7片	S:帶手動 無:不帶手動

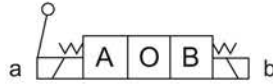
■ 閥芯機能



■ 外形尺寸



附手動電磁閥
DSM系列

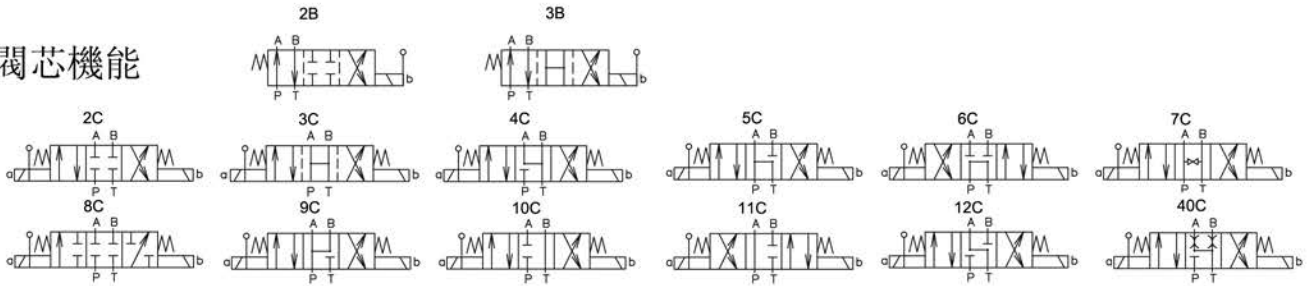


■選購說明

DSM 系列號	02 通徑	2C 閥芯機能	D2 線圈電壓	最高壓力 bar	流量 L/min
附手動 電磁閥	6	見閥芯機能	D2:24V A2:220V D1:12V A1:110V	250	80



■閥芯機能



■外形尺寸

